

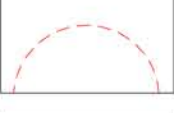




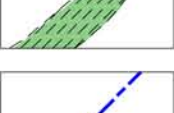

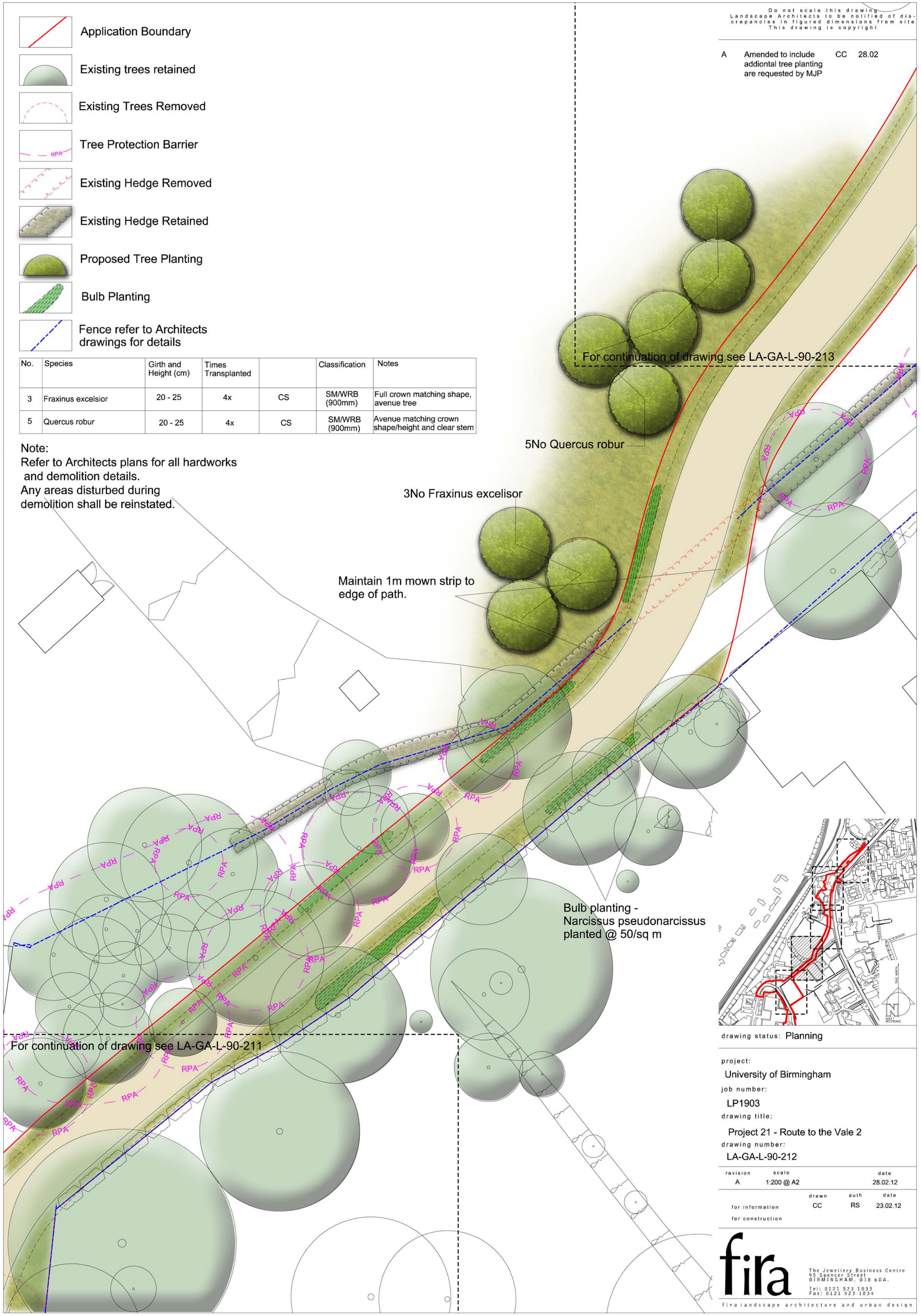


-  Application Boundary
-  Existing trees retained
-  Existing Trees Removed
-  Tree Protection Barrier
-  Existing Hedge Removed
-  Existing Hedge Retained
-  Proposed Tree Planting
-  Bulb Planting
-  Fence refer to Architects drawings for details

No.	Species	Girth and Height (cm)	Times Transplanted		Classification	Notes
3	Fraxinus excelsior	20 - 25	4x	CS	SM/WRB (900mm)	Full crown matching shape, avenue tree
5	Quercus robur	20 - 25	4x	CS	SM/WRB (900mm)	Avenue matching crown shape/height and clear stem

Note:
Refer to Architects plans for all hardworks and demolition details.
Any areas disturbed during demolition shall be reinstated.



For continuation of drawing see LA-GA-L-90-213

5No Quercus robur

3No Fraxinus excelsior

Maintain 1m mown strip to edge of path.

Bulb planting -
Narcissus pseudonarcissus
planted @ 50/sq m

For continuation of drawing see LA-GA-L-90-211



drawing status: Planning

project:
University of Birmingham

job number:
LP1903

drawing title:
Project 21 - Route to the Vale 2

drawing number:
LA-GA-L-90-212

revision	scale	date
A	1:200 @ A2	28.02.12

for information	drawn	auth	date
for construction	CC	RS	23.02.12