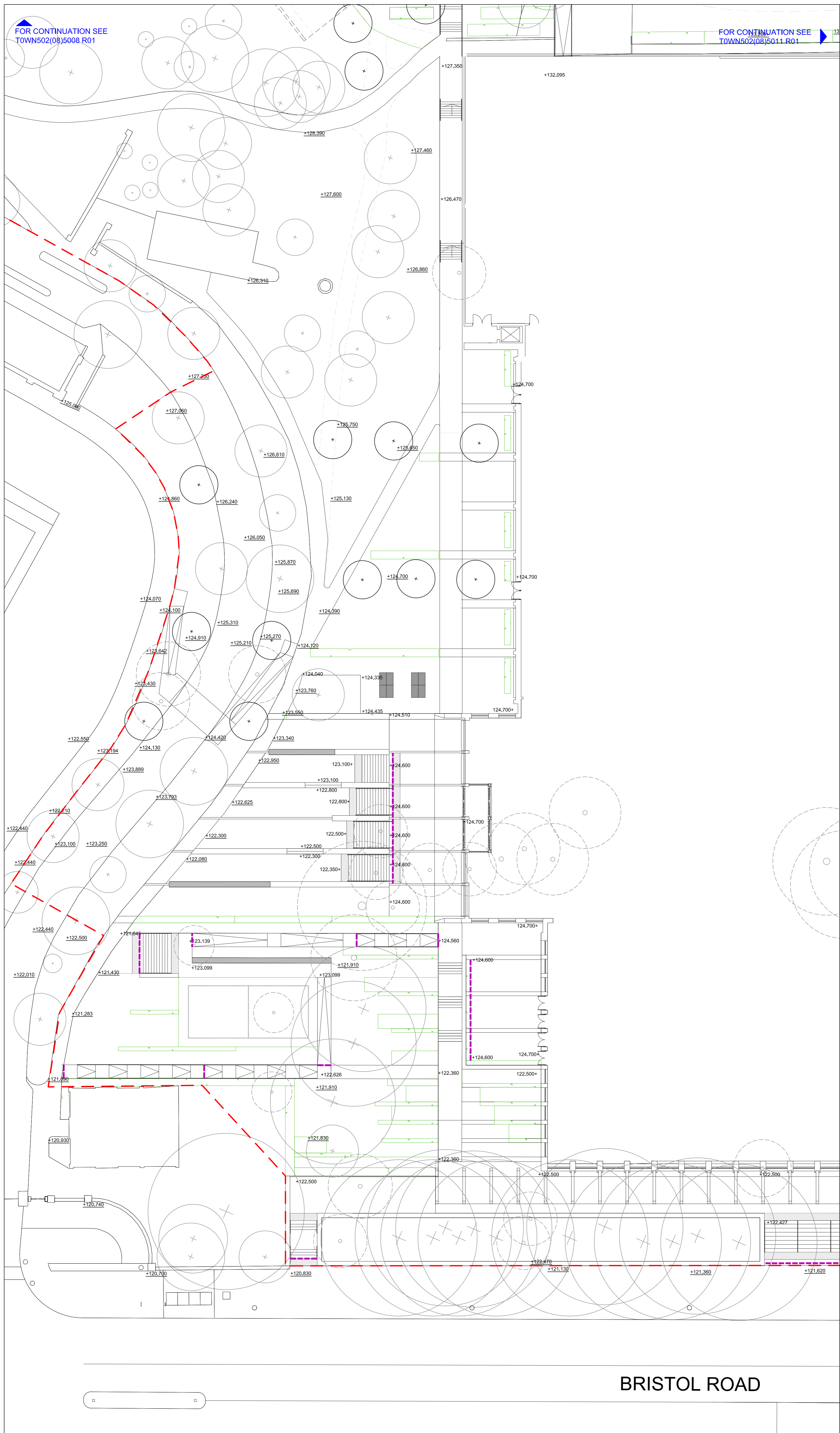


FOR CONTINUATION SEE
TOWN502(08)5008 R01

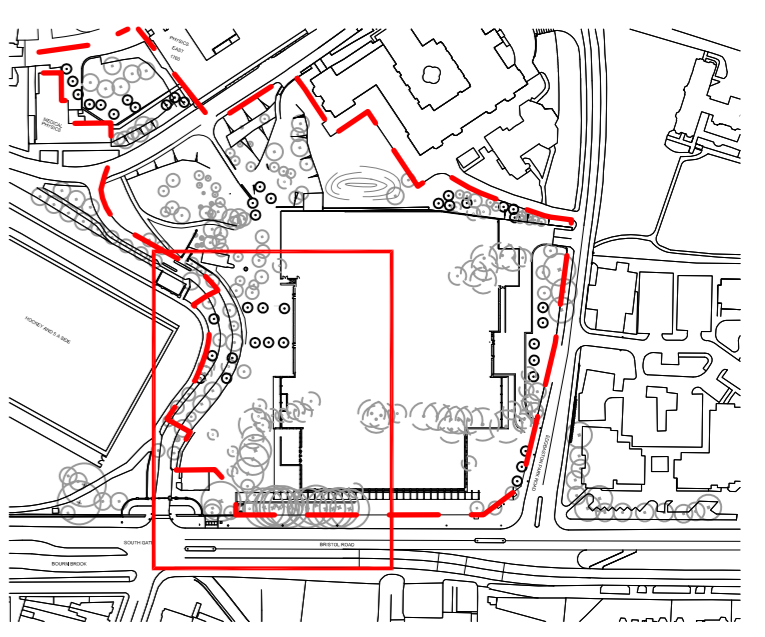
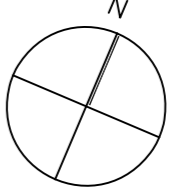
FOR CONTINUATION SEE
TOWN502(08)5011 R01

KEY

- +000.000 EXISTING LEVEL
- +000.000 PROPOSED LEVEL
- DRAINAGE CHANNEL TO ENGINEER'S DETAIL AND SPECIFICATION
- o GULLY TO DRAINAGE ENGINEERS DETAIL AND SPECIFICATION
- PLANNING APPLICATION BOUNDARY



FOR PLANNING



BRISTOL ROAD

Project UNIVERSITY OF BIRMINGHAM INDOOR SPORTS FACILITY	Drawing Title LEVELS AND DRAINAGE PLAN (4 OF 5)	Revision	Date	Client: University of Birmingham Address: Estates Office University of Birmingham Edgbaston Birmingham B15 2TT	Consultant TOWNSHEND Landscape Architects Unit 5A Zetland House London EC2A 4HD Telephone: 020 7729 9333 Fax: 020 7729 3300 E-Mail: t@townshend.co.uk	Project No.	Scale	Approved By	Drawing No.	Revision
		R00 PLANNING ISSUE	27/01/12			502	1:200	CE	TOWN502(08)5010	R02
		R01 ROUTE UPDATED	27/02/12			Date	Drawing Size	Drawn By		
		R02 MEDICAL PHYSICS LABEL	07/03/12			JAN 2012	A1	GH		

Dimensions to be verified on site.
Figured dimensions to take precedence to those scaled.
Any areas indicated on this drawing are for guidance only.
No responsibility is taken for their accuracy.