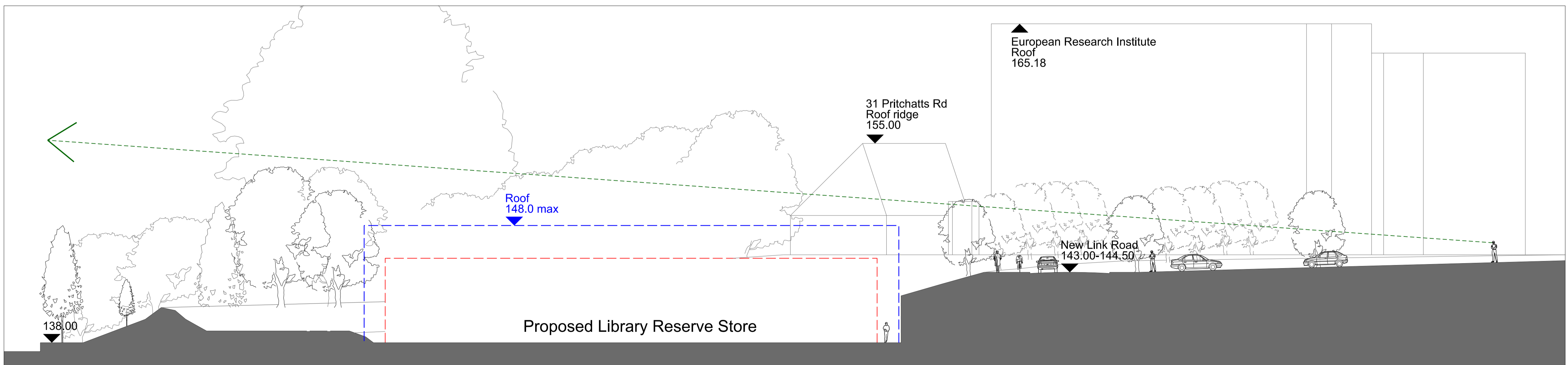




- KEY**
- Vehicle access from access road
  - Views from Green Heart towards the Hospital Site - building lowered to maintain views of sky line
  - Minimum extent of building
  - Maximum extent of building

Project 15b: Library Reserve Store Parameters Plan - scale 1:200



Project 15b: Library Reserve Store Parameters Section A-A - scale 1:200

Rev	Date	Description	By	Chk	App
-	02.03.2012	PLANNING ISSUE	TF	LP	LP
A	09.03.2012	RE- ISSUED FOR PLANNING	TF	LP	LP

Rev	Date	Description	By	Chk	App

**GENERAL NOTES**

DO NOT SCALE DRAWINGS. USE FIGURED DIMENSIONS ONLY.  
ALL DIMENSIONS TO BE CHECKED ON SITE. DISCREPANCIES TO BE REPORTED IMMEDIATELY TO THE ARCHITECT FOR STRUCTURAL DIMENSIONS AND SETTING OUT SEE STRUCTURAL ENGINEERS DRAWINGS

ALL INFORMATION SUBJECT TO STATUTORY APPROVALS BEING OBTAINED  
INFORMATION NOT TO BE USED OTHER THAN AS DEFINED BY THE DRAWING STATUS

Edgbaston Central Campus Development Drawing No. 0504 - A HA- 15 - 303 - A  
Hybrid Planning Application Scale 1:200 @ A1  
Project 15abc,12: Library Enabling Works and Demolition of Substation 24 File Name N/A  
New Library Store Parameters Plan Date 01/02/2012  
9 HENEAGE STREET, SPITALFIELDS, LONDON, E1 5LJ



NOTE: DO NOT SCALE DRAWINGS. ALL DIMENSIONS TO BE CHECKED ON SITE. ERRORS TO BE REPORTED IMMEDIATELY TO THE ARCHITECT