

Alumni Finder User's Manual

Wei Wu

School of Business



Motivation

Alumni Finder

Find Where you Belong

Building better connections with graduates and students

Establishment:

- 300,000 alumni
- 5,000 international students
- From 150 countries
- 4 LinkedIn Groups
 - 1 official University Profile
 - 1 for LinkedIn HEI page
 - 2 owned by alumni

Gaps

- 2 groups fully registered;
- Application auto-rejected;
- No searching function;
- 100,000 silent followers;
- 1751 Chinese graduates?
- Inactive interactions;

Potential Outcomes

- Students identify each other for academic interest or course enquires;
- Students explore career/ entrepreneur opportunities from Alumni;
- Alumni exchange career experience and opportunities with each other;
- Alumni release career information within UoB community;
- Access of public engagement for University researchers

Selling Points

Alumni Finder
Find Where you Belong

- Crowd-sourcing/funding
- Community based configuration
- Geographical identification
- Mobile based payment



Crowd-sourcing

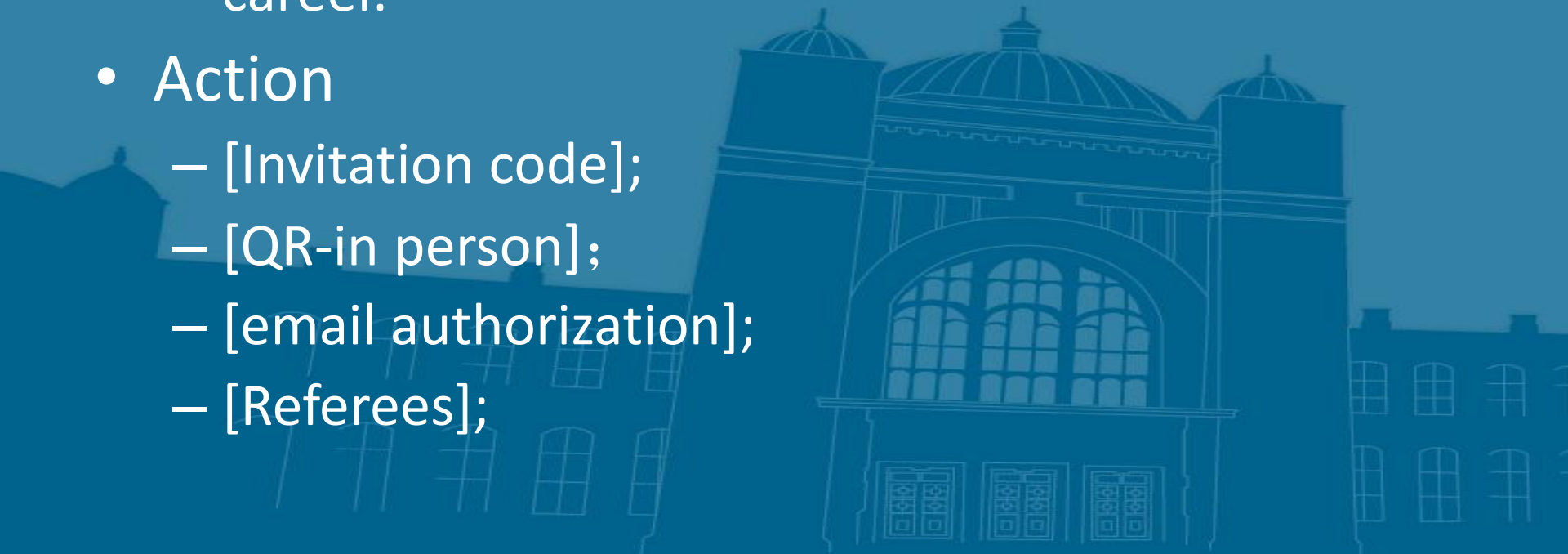
Alumni Finder
Find Where you Belong

- Principle:
 - anyone can launch its project and organize most suitable people to collaborate in easiest way;
 - Anyone who contributed to the community deserve rewarding;
- Action:
 - [New]+[Hot]+[Following]+[Credit]

Configuration

Alumni Finder
Find Where you Belong

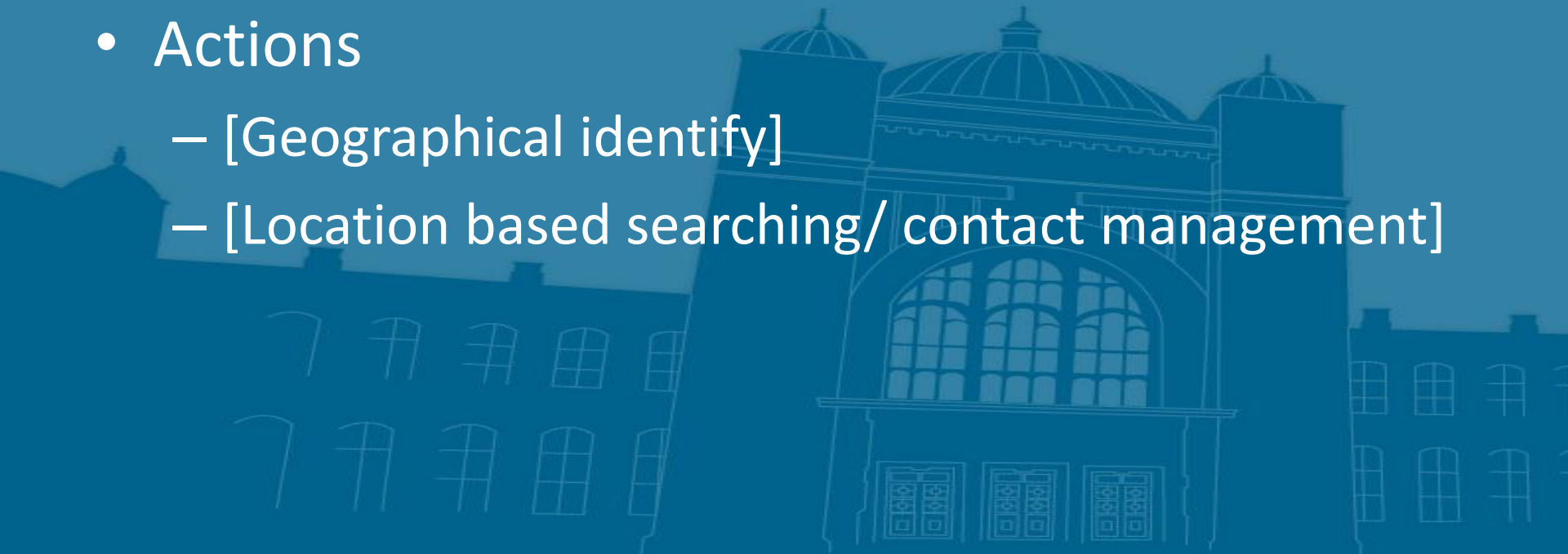
- Principle
 - Embrace and believe in people around you.
 - Alumni are beautiful people to illuminate your career.
- Action
 - [Invitation code];
 - [QR-in person];
 - [email authorization];
 - [Referees];



Maps

Alumni Finder
Find Where you Belong

- Principle
 - Understand your network in a better way;
 - Visualising your social capital;
- Actions
 - [Geographical identify]
 - [Location based searching/ contact management]



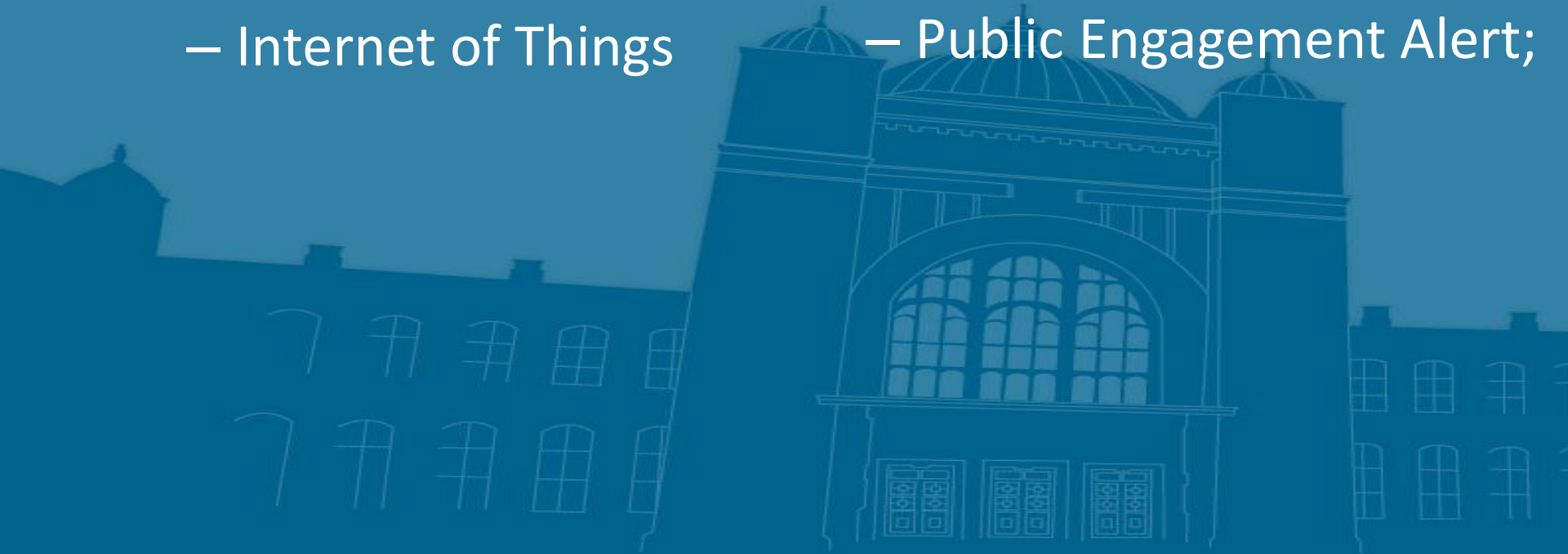
Payment

- Principle
 - Alternative finance comes along with disruptive education.
 - Financial education should be offered along with academic course.
 - Secure, fast, stable and traceable;
- Action
 - [Campus Coin Wallet]
 - [International Tuition Payment]
 - [Encrypted block-chain back up]

Benefits

Alumni Finder
Find Where you Belong

- For Corporations
 - HRM Solutions
 - Financial Inclusion
 - Internet of Things
- For Universities
 - Alumni Management;
 - International branding;
 - Public Engagement Alert;



Future Plan

Alumni Finder
Find Where you Belong

- University Configuration Support via MyBham;
- Support of campus payment system;
- Access to space administration system;



Alumni Finder

Find Where you Belong

Q & A

