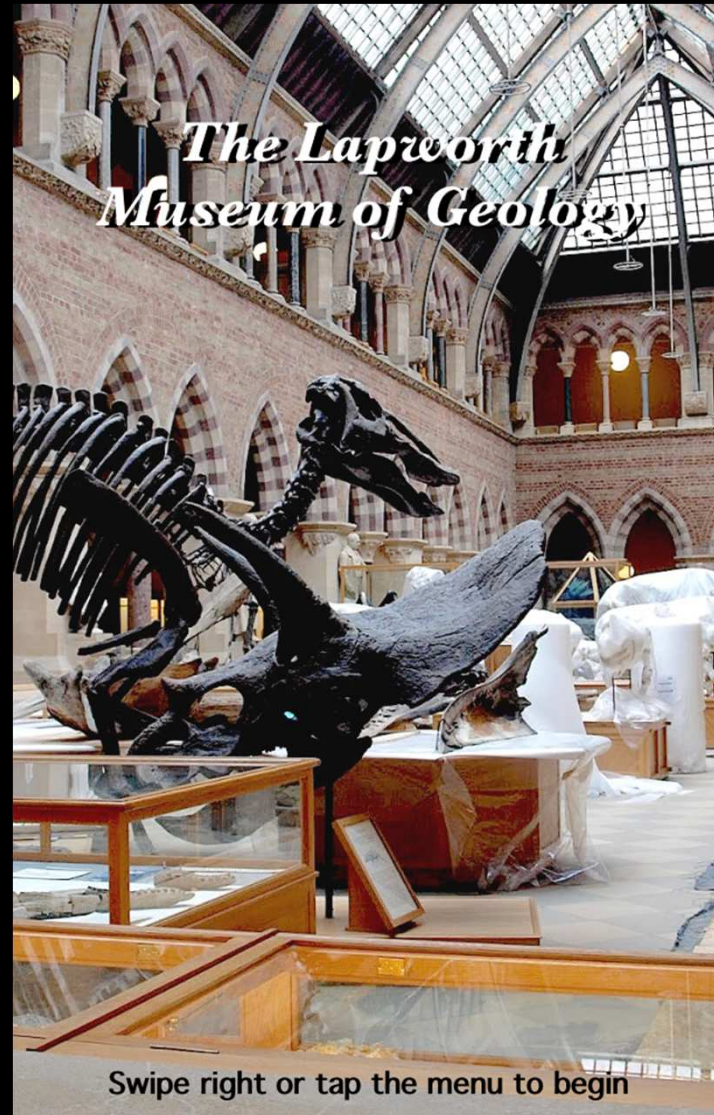


Joe Faulls



Adedayo  
Omosanya

Four key themes:

- Discovery
- Education
- Animation
- Advertising

Four key themes:

- **Discovery**
- Education
- Animation
- Advertising

Four key themes:

- Discovery
- **Education**
- Animation
- Advertising

Four key themes:

- Discovery
- Education
- **Animation**
- Advertising

Four key themes:

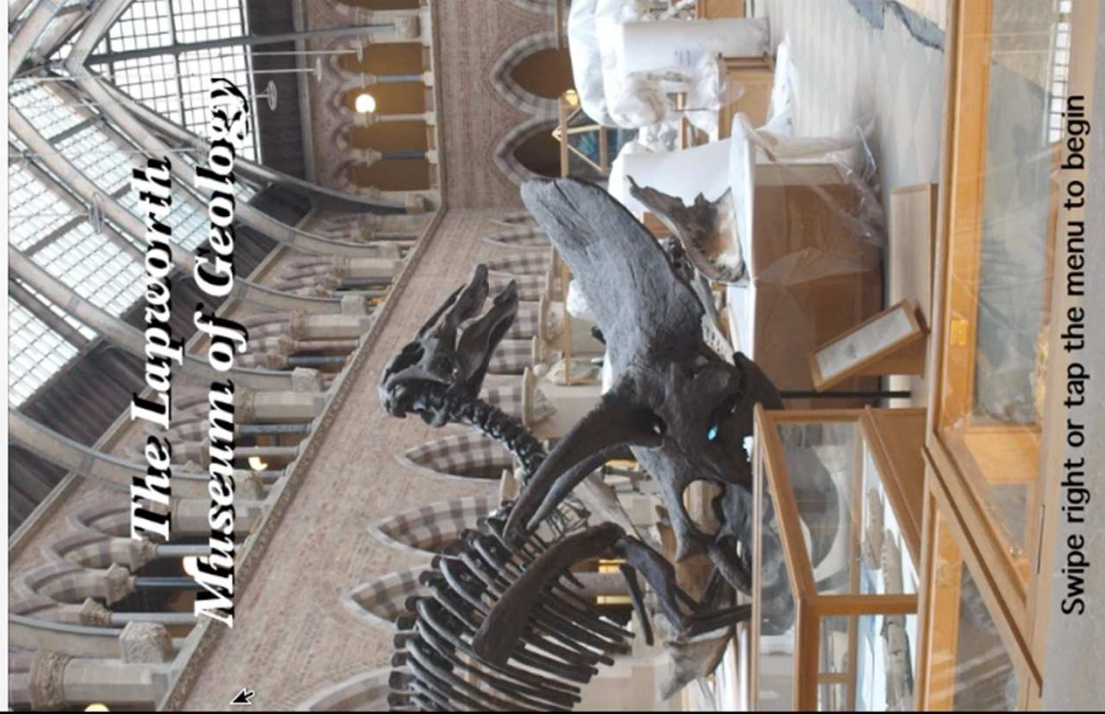
- Discovery
- Education
- Animation
- Advertising

Carrier

5:17 PM



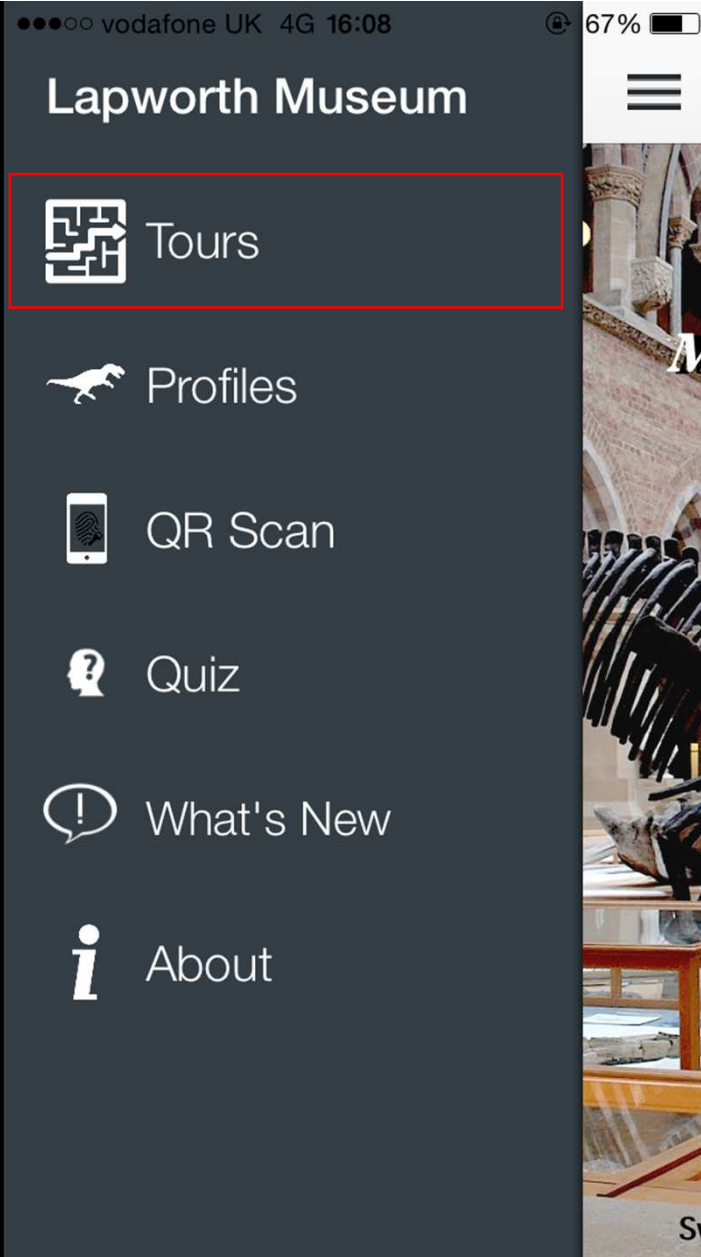
Home



Swipe right or tap the menu to begin

Show off everything  
the museum has to  
offer

Look at the things you  
want to look at



Organisation of people



Carrier

5:28 PM

# Lapworth Museum



Tours



Profiles



QR Scan



Quiz



What's New




About




Sw

 **Tours** **Select your tour**

Dino Tour 

Earth and Space Tour 

Night at the Museum Tour 

Popular Tour 

Custom tour 

---

---

---

---

---

---

---

---

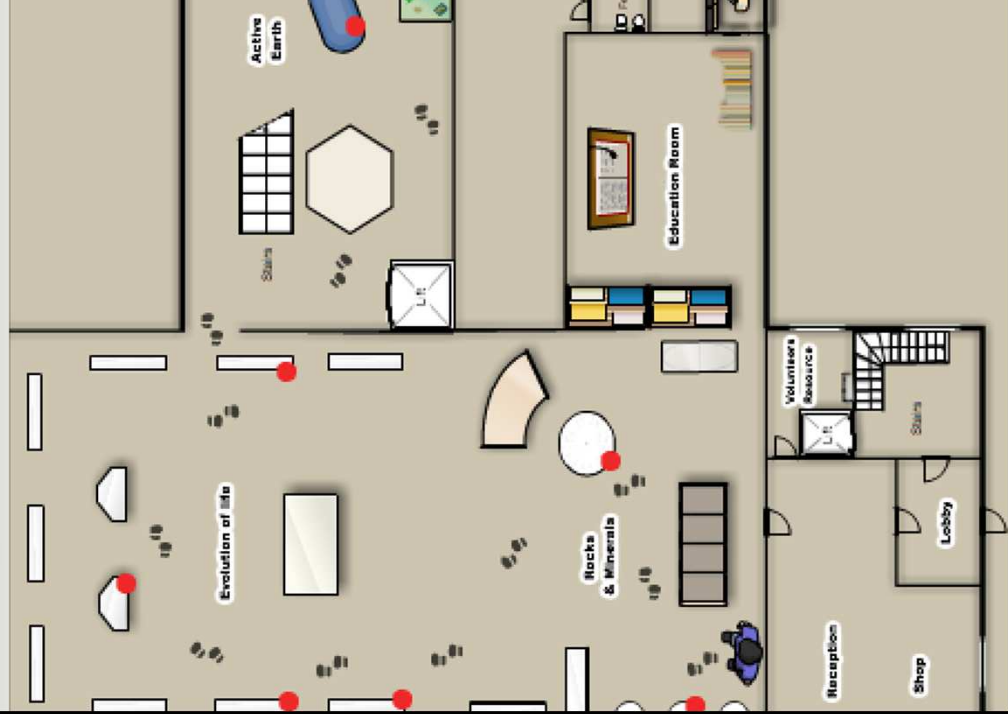
---

---

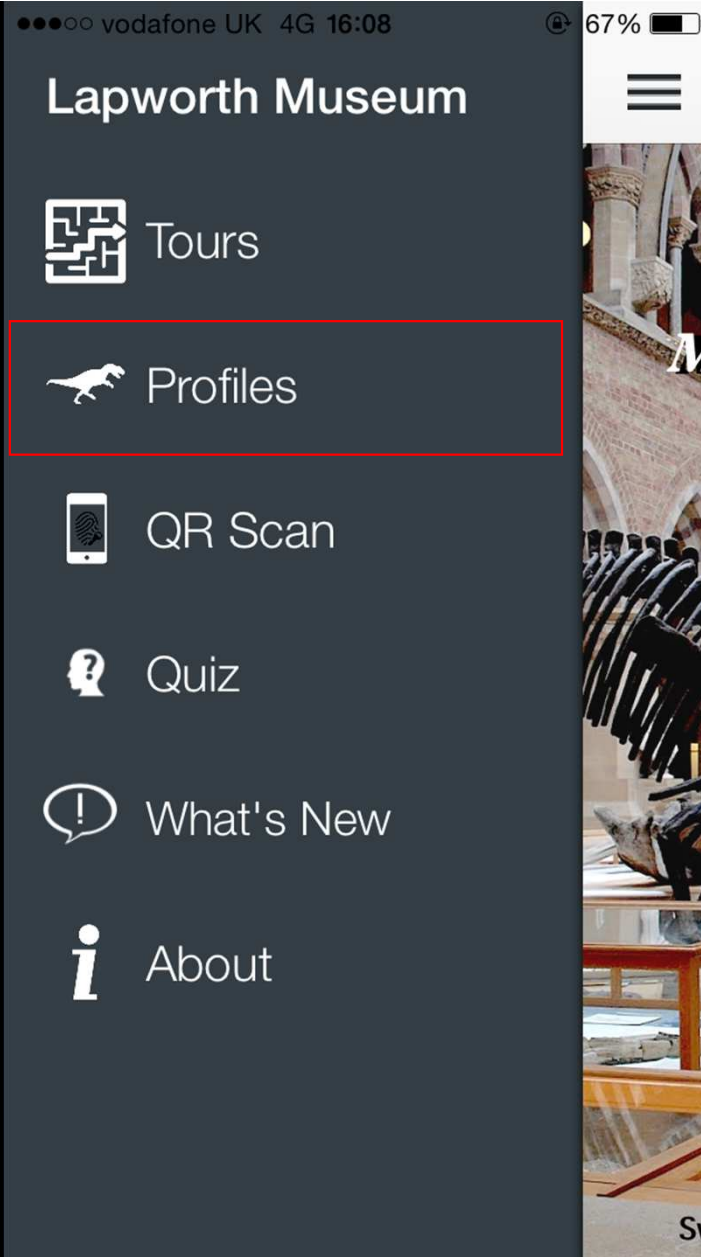
This tour has been custom made for you



# Your Tour



Provide additional information



Engaging



## Select Category



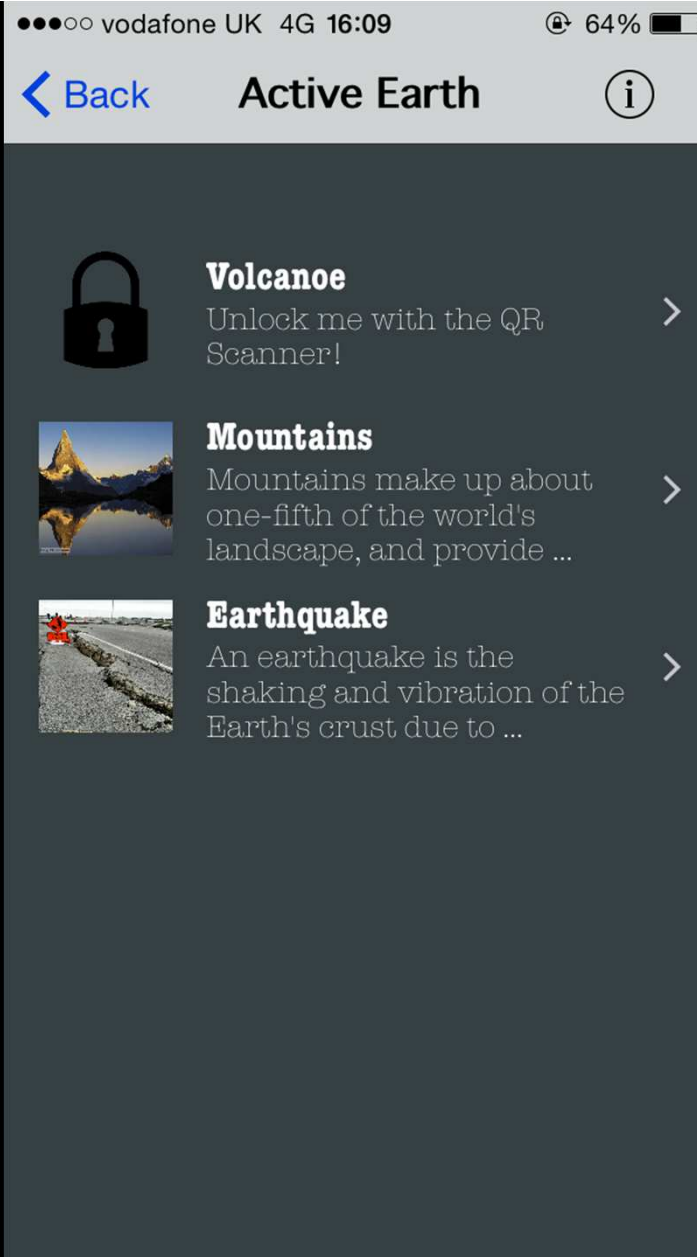
Evolution of life

Active earth

Rocks & minerals

Education & discovery

You cannot view a profile you haven't visited




Fetches from a database

Every profile of the same theme follows a similar pattern

vodafone UK 4G 18:33 96%

[Back](#)



Size: 9-11 ft tall  
Weight: 6 tonnes  
Time period: 150,000 - 4000 years ago  
Diet: Grasses, shrubs, mosses.  
Woolly Mammoths are a very iconic animal of the last Ice Age; and for good reason too.  
It is still possible to find very intact mammoth carcasses that have been frozen today!

[Profile](#) [Pictures](#) [More Info](#)



Size: 9-11 ft tall

Weight: 6 tonnes

Time period: 150,000 - 4000 years ago

Diet: Grasses, shrubs, mosses.

Woolly Mammoths are a very iconic animal of the last Ice Age; and for good reason too.

It is still possible to find very intact mammoth carcasses that have been frozen today!





Size: 9-11 ft tall

Weight: 6 tonnes

Time period: 150,000 - 4000 years ago

Diet: Grasses, shrubs, mosses.

Woolly Mammoths are a very iconic animal of the last Ice Age; and for good reason too.

It is still possible to find very intact mammoth carcasses that have been frozen today!



Profile



Pictures



More Info

## Fun Facts

Mammoth fossils have been discovered on every continent except Australia, South America and Antarctica.

**Appearance:** Similar to modern elephants

The woolly mammoth stood about as tall as an Asian elephant. Its skull was also narrower than that of modern elephants; in addition, its ears were smaller and its tail shorter, both of which were adaptations to extreme cold. Woolly mammoths had a full coat of fur consisting of long, coarse exterior hair and a short, dense layer underneath.

**Longevity:** 60 - 80 years

Mammoths usually died after their last set of teeth wore away, usually at around 60 to 80 years.



Profile

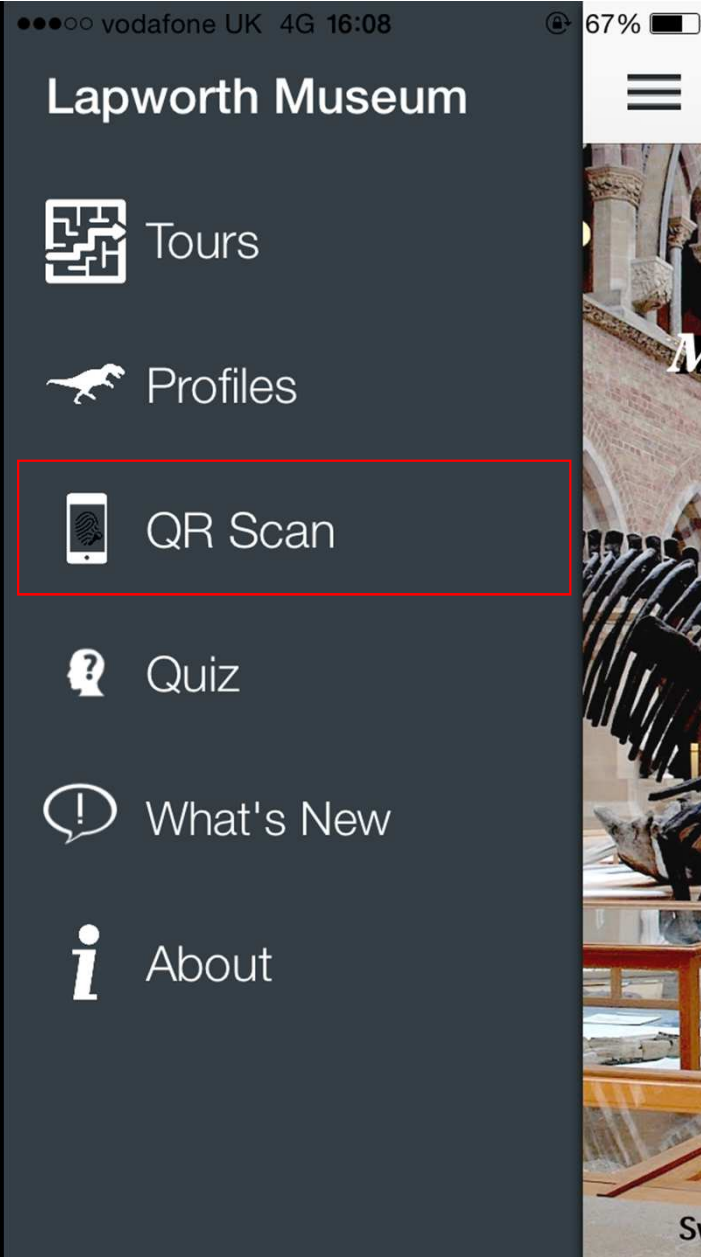


Pictures

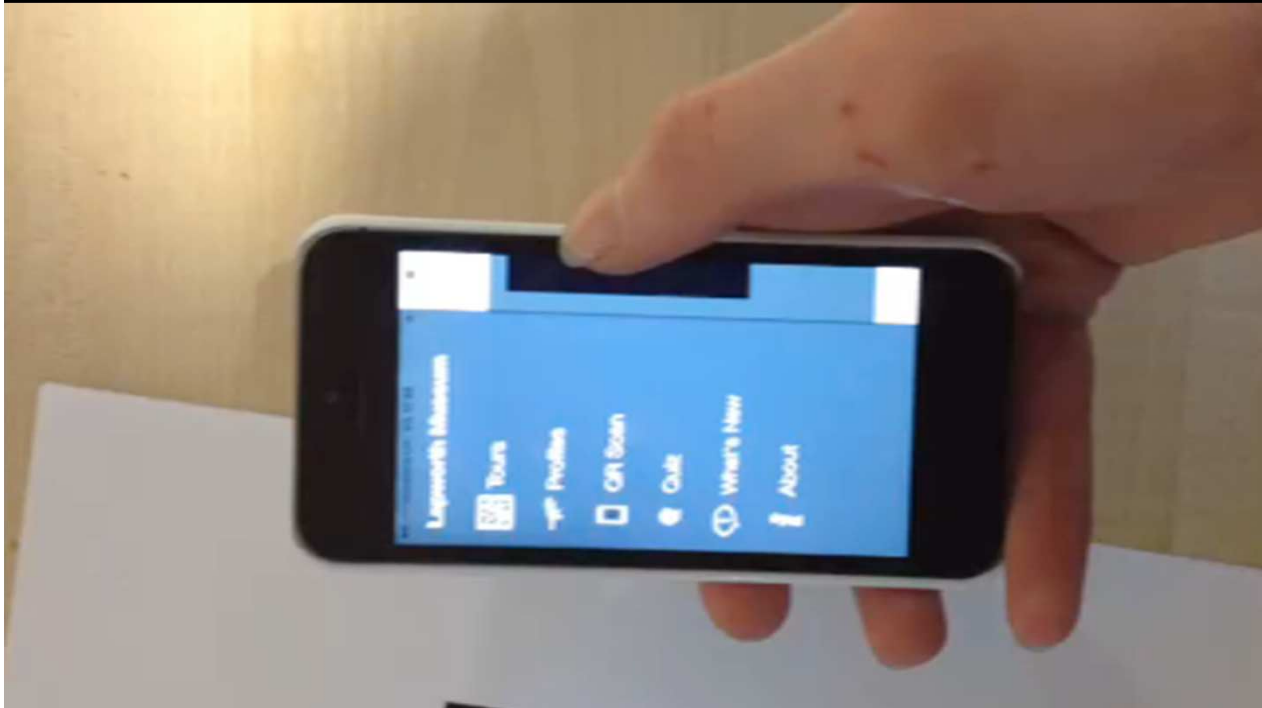


More Info

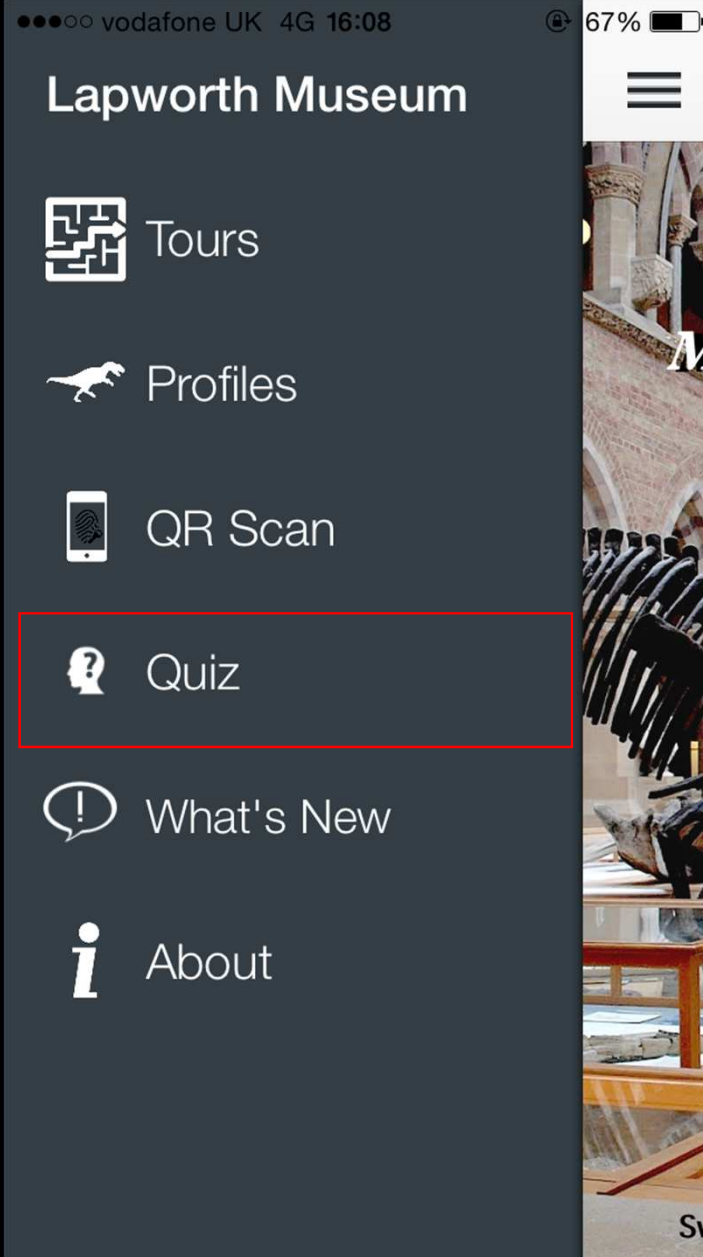
Sense of  
accomplishment



Motivation to visit  
every exhibition



Entertainment



Educational

Carrier

5:38 PM



Test your knowledge of the artifa

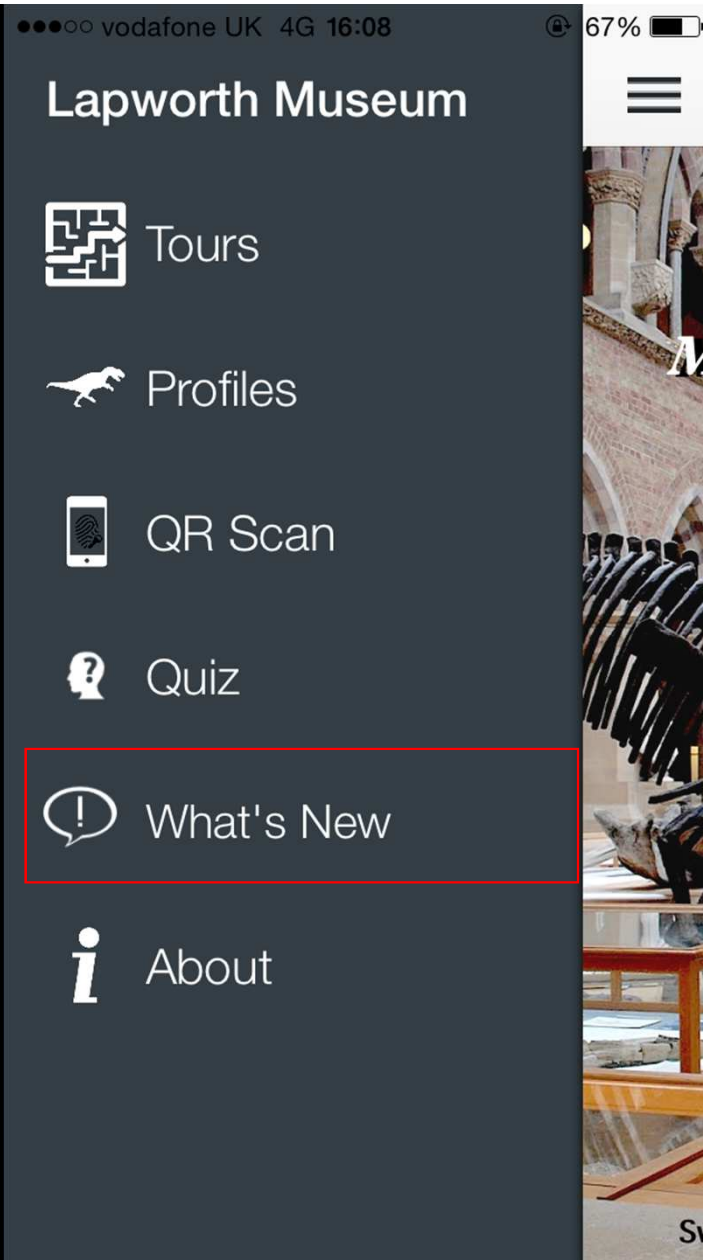


Quiz

*Ready to test  
your  
knowledge?*

Start

Reasons to come back

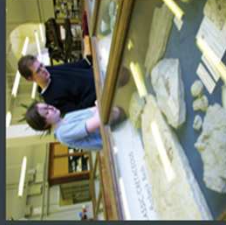


Fetches from database



### Education

The museum is used regularly by schools, colleges and adult education groups. Activities, including hands-on sessions, can be arranged to suit specific topics an...



### Lapworth Lectures

The Lapworth Lectures take place on certain evenings during University term time. These lectures on popular geological subjects are aimed at students, the general public and amat...



### Day Schools

The Lapworth Museum organises several weekend day schools during the year. These



●●○○○ vodafon...   @ 37% 

# 04:45

Friday 13 March



**Lapworth Museum** now

Come and check out the new exciting dinosaur exhibition in the Temporary Exhibition room!

slide to view

> slide to unlock



# Lapworth Museum



Tours



Profiles



QR Scan



Quiz



What's New



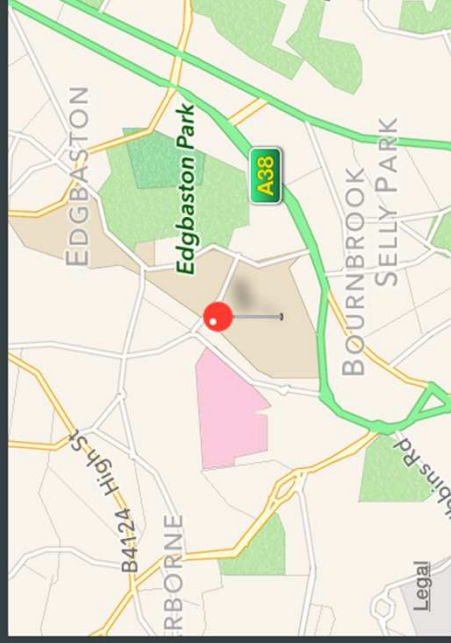
About



Sw



## About Lapworth



### Directions

**IMPORTANT NOTICE:** The Lapworth Museum will be closed from Monday 1st December 2014 for a major redevelopment and will be reopening October 2015. Please follow either our website, Twitter or Facebook for regular updates about our exciting redevelopment project.

### Opening Hours

Monday to Friday 9.00am - 5.00pm  
Saturday & Sunday 12.00pm - 5.00pm

